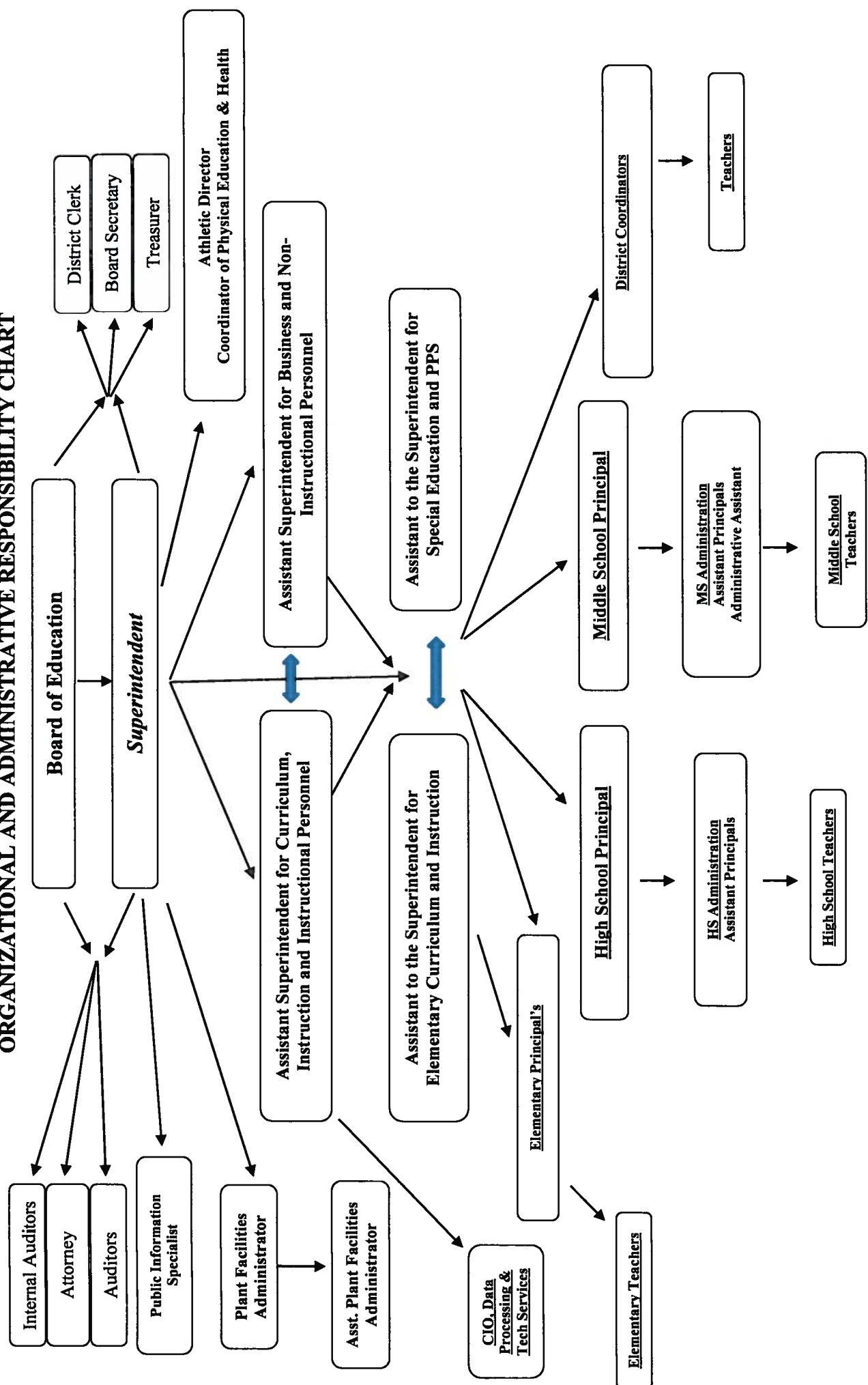


Organization Chart

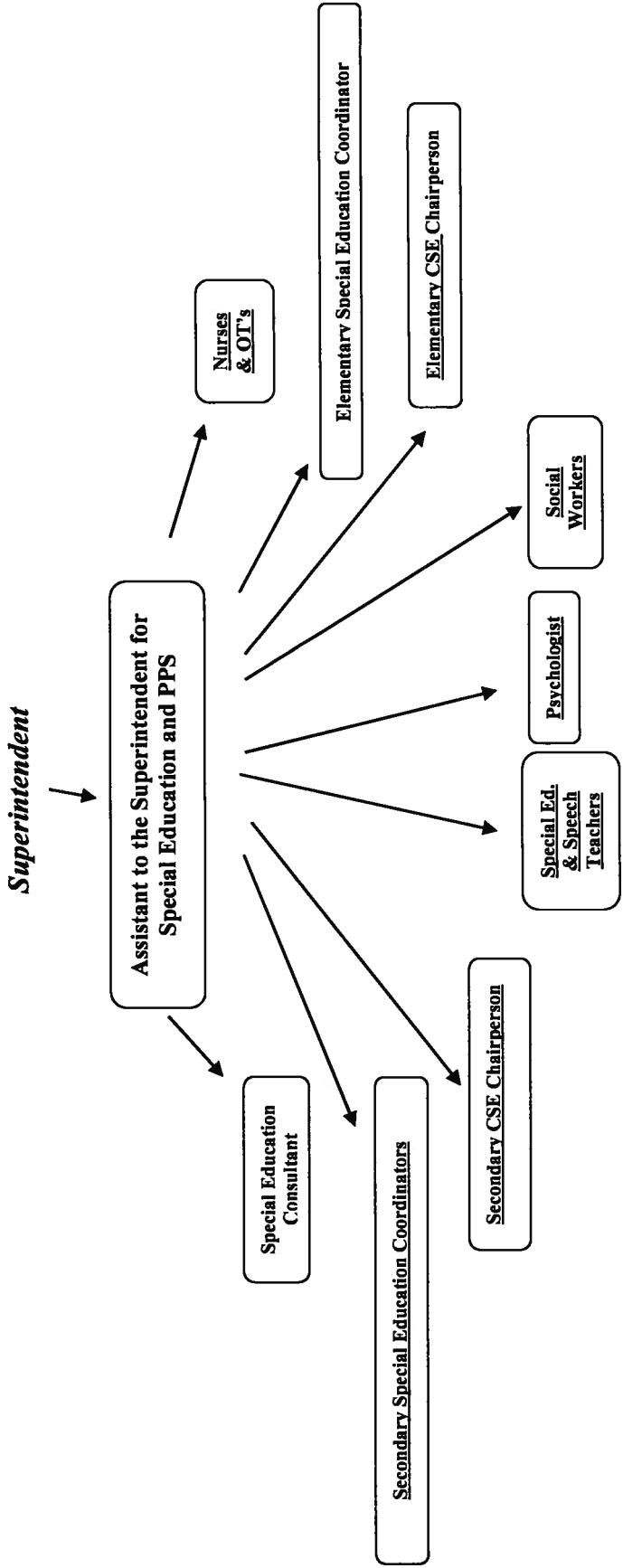
The Superintendent of Schools shall maintain an administrative organization chart showing the relationship among the various administrators and staff.

Adoption date: February 4, 2009
Revised: September 22, 2010
Revised: October 21, 2015

**LINDENHURST UNION FREE SCHOOL DISTRICT
ORGANIZATIONAL AND ADMINISTRATIVE RESPONSIBILITY CHART**



LINDENHURST UNION FREE SCHOOL DISTRICT
ORGANIZATIONAL AND ADMINISTRATIVE RESPONSIBILITY CHART



**LINDENHURST UNION FREE SCHOOL DISTRICT
ORGANIZATIONAL AND ADMINISTRATIVE RESPONSIBILITY CHART**

